

Fulfilling Environmental Education's Promise:

Authentic Learning and Real World Impact



February 9 -12, 2012

Clarion Resort Fontainebleau - Ocean City, Maryland

Conference Highlights

Thursday Professional Development Institute

Sponsored by the Maryland Sea Grant Extension Program/ University of Maryland Extension STEM Education Action Team Grant, College Park, MD, four focused, content-based programs explore key topics in significant depth. These courses complement the applied methodologies that will be explored on Friday and Saturday. *Following a Drop of Water with Google Earth *Which Way to the Oyster Bar? *Who Killed Crassostrea Virginica?

NOAA NCBO is offering

Building Climate Understanding. A full day workshop.

Thursday Field Experience

Swanfall – An Exploration of the Tundra Swan. 4:00-7:00pm

Thursday Environmental Trivia Night

Join MAEOE friends at the Clarion's Breakers Pub for an evening of environmental trivia fun.

Friday Outdoor & Environmental Center Symposium

Management is invited to gather and share information specific to Green Centers and nature centers, including program challenges and solutions, and impacts of legislation. This year discussions will focus on sharing new ideas, challenges, and best practices regarding common interests: grants and partnerships, professional development for school staff, and innovative lessons.

Friday Workshops

Friday workshops include a fascinating range of topics such as:

- The Fishmobile – Bringing the Living Chesapeake into the Classroom
- Lights, Camera, Action! Using Digital Video Tools to Teach Environmental Education
- Creating a Rain Garden as a Schoolyard Habitat

Friday Night Social

Meet our exhibitors, get your first look at the silent auction items. catch up with friends and make new connections. Cash bar and hors d'oeuvres.

Conference Opening

Welcome and presentation of the 2012 Bob Finton Outdoor Educator of the Year Award and recognition of newly Certified Professional Environmental Educators.

Keynote Speakers

Daniel T. Blumstein, Professor and Department Chair, UCLA Department of Ecology and Evolutionary Biology and Charlie Saylan, co-founder, Ocean Conservation Society, authors of the recently published book: *The Failure of Environmental Education (And How We Can Fix It)*



MAEOE

Maryland Association for Environmental and Outdoor Education

Saturday Sessions

Choose from an expanded selection of 55 + exciting workshops - many new titles and presenters. Visit www.maee.org for details!

Saturday Plenary Session

Are you concerned about toxins impacting your health, the impact of climate change in our area or fracking for natural gas production? Join us as three panel members share their expertise in this engaging and interactive session. McKay Jenkins, author of *What's Gotten Into Us? Staying Healthy in a Toxic World*, Mike Tidwell, *Chesapeake Climate Action Network*, and Daniel Soeder, *National Energy Technology Laboratory*.

Saturday Evening Closing Ceremony

Saturday Night Celebration

Celebrate a successful conference with new and old friends while enjoying hors d'oeuvres, a cash bar and the TumbleHome Band, "American Roots Music in the Heart of Charm City."


Sunday Field Experiences

- Winter Canoeing on the Pocomoke River
- Winter Bird Walk - Exploring Inlet Hotspots

Exhibits

30+ organizations, agencies, businesses and vendors offering a range of information and resources as well as products for purchase.

MAEOE 2012 Schedule at a Glance

Date	Time	Event	Location
Thurs. February 9, 2012	9:00am-4:00pm 4:00pm-7:00pm 6:00pm	Professional Development Institute - Sponsored by UMD Extension Thursday Field Experience: Swanfall – An Exploration of the Tundra Swan Networking Social Happy Hour and Environmental Trivia Competition	UMES Clarion Lounge
Fri. February 10, 2012	7:00am-7:00pm 7:45am-8:15am 9:00am-4:00pm 9:00am-12:00pm 9:00am-3:00pm 5:00pm-7:00pm 7:30pm-9:00pm 9:00pm-11:00pm	Registration/Information Desk Light Continental Breakfast for Workshop Participants* Workshops Outdoor Center Symposium Exhibit Hall Set-Up Exhibit Hall - SNEAK PEEK Conference Opening and Keynote Exhibit Hall Social - Cash Bar and Light Fare	Terrace Lobby Near Registration Clarion Clarion Grand Ballroom Grand Ballroom Crystal Ballroom Grand Ballroom
Sat. February 11, 2012	7:00am-7:00pm 6:30-8am 6:30am 8:00-8:50am 9:00-9:50am 10:00-10:50am 11:00-11:50am 3:00-3:50pm 4:00-4:50pm 12:00-1:00pm 1:00-2:30pm 2:30-3:00pm 5:00-6:15pm 5:30pm 8:00pm-12:00am	Registration/Information Desk Hot Breakfast Buffet* Exhibits Open Concurrent Sessions  Concurrent Sessions Lunch - Plated Plenary Session Afternoon Cookie Break Ice Cream Social Silent Auction Ends Social - with Light Fare and the TumbleHome Band <i>Please pick up your auction items at the social</i>	Terrace Lobby Restaurant Main Concourse Clarion Restaurant Crystal Ballroom Exhibit Hall Exhibit Hall Main Concourse Grand Ballroom
Sun. February 12, 2012	Field Experiences	Winter Bird Walk Exploring Inlet Hotspots Winter Canoeing on the Pocomoke River	TBD TBD

* Fresh coffee will be available near the registration area all day.



Clarion Resort Fontainebleau
10100 Coastal Highway
Ocean City, Maryland 21842

800-638-2100 / 410-524-3535

info@clarionoc.com

NOTE: You must call to make reservations. Do not use the online system. In order to receive the special conference rate, this must be done no later than January 9, 2012. Space is limited. Room accommodations are done by individuals or groups and are independent of the conference registration form. Remember to identify yourself as a MAEOE conference participant.

The Clarion Resort Fontainebleau Hotel is the finest all non-smoking hotel in Ocean City, Maryland. Located on the beach overlooking the Atlantic Ocean, you'll get the best in Ocean City resorts with unmatched comfort and convenience.

Featured are luxury non-smoking, ocean-view rooms, two oceanfront restaurants, a nightclub, live entertainment both inside and on the beach (in season), a health club, year-round indoor pool, and heated outdoor pool (open in season).

SPECIAL CONFERENCE RATES

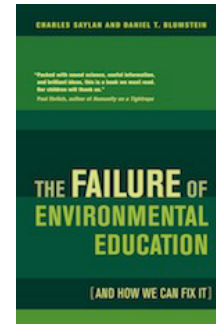
Conference rates will apply until January 9, 2012. A special Sunday Stay-Over Rate is also available = \$69.00

Room	Single/Double Rate
Double/Double	\$ 93
Executive King	\$113
Studio King	\$123
Cabana	\$143
1 - Bedroom Condo	\$ 93
2 - Bedroom Condo	\$133
3 - Bedroom Condo	\$163

Check In: 4:00 pm / Check Out: 11:00 am

Guest room rates are based on single or double occupancy while condominium rates are based on a maximum of two people per bedroom. For condominiums, rates do not include daily housekeeping service. Extra person charge is \$15.00 per night. Children under 18 stay free in their parents' room using existing bedding. Currently a 9% state and local tax is applicable to the room rates. Such taxes are subject to change without notice.

Keynote Speakers



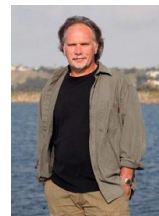
Charles Saylan and Daniel T. Blumstein, authors of the recently published book: *The Failure of Environmental Education (And How We Can Fix It)*

Dan Blumstein



Dan Blumstein is a Professor and Chair of the Department of Ecology and Evolutionary Biology, and is a Professor in the Institute of the Environment and Sustainability. Dan is broadly interested in the evolution of behavior and conservation biology and the integration of behavior into other disciplines.

Charlie Saylan



Charlie Saylan is the Executive Director of the California based Ocean Conservation Society. He co-founded Ocean Conservation Society to help protect ocean ecosystems through scientific research, education and public outreach. He has worked toward raising public awareness of environmental issues and stimulating action through the creation and implementation of participatory environmental education programs. He is co-author of several peer-reviewed scientific papers on cetacean ecology and conservation, and is active in ongoing field marine mammal research focusing on the effects of pollutants on cetaceans.

Plenary Panel

Join us as three panel members share their expertise on toxins impacting your health, the impact of climate change in our area and fracking for natural gas production. **McKay Jenkins**, the Cornelius Tilghman Professor of English and Director of Journalism; **Mike Tidwell**, author, predicted in vivid detail the Katrina hurricane disaster in his 2003 book, *Bayou Farewell: The Rich Life and Tragic Death of Louisiana's Cajun Coast*; and **Dan Soeder**, a geologist with the U.S. Department of Energy at the National Energy Technology Laboratory in Morgantown, West Virginia, where his interests include energy and environmental issues related to unconventional fossil energy resources.

More MAEOE!

Maryland Green School & Green Center Review

Is your school or center working on an application to become a Maryland Green School or Green Center in 2012? Regardless of how far along you are in the process, consider attending the review session for an informal chat with application reviewers. Then learn what your school or center needs to do to receive this prestigious recognition. Bring any documentation you would like feedback on. **Please RSVP on the registration form.**

A Greener Conference

- Paper Source - All conference materials are printed on paper with the highest recycle rate available and Forest Certified stock.
- Book Swap - Bring a book/take a book. Last year the selection of books was phenomenal, from textbooks, coffee table books, curriculums, non-fiction, fiction, good books, not so-good books and more.
- Carbon Offsets - A portion of the registration fee will be used to offset estimated carbon emissions associated with the conference.
- Carpooling/Room Sharing - Reduce your carbon footprint and CARPOOL. Plus, save more and share a room. Check the MAEOE web site for carpooling information and announcements.
- Bring Your Own Mug - Reduce the eco-footprint of the conference; bring and reuse your own coffee mug!
- Save Paper: Register Online! - Use your Visa or Mastercard to register online at www.maeoe.org through January 27, 2012

Conference Scholarships

The scholarship program was established to help formal and non-formal educators and students to attend the annual conference. Scholarships cover the cost of registration only. Transportation, accommodations, Thursday and Friday workshops are not covered. Scholarships are available to high school and college students, classroom teachers, and

beginning (1-2 years experience) outdoor center educators. Scholarship proceeds are from the 2011 Silent Auction. The number of scholarships offered varies each year. More information and the online application form can be found at <http://www.maeoe.org/conference/scholarship/index.php>. Completed applications are due by December 7th. Final decisions will be made by the end of December.

NOTE: If you apply and are not selected for funding, you will still be able to register at the early bird rate.

The Robert Finton Outdoor Educator of the Year Award

Bob Finton personified enthusiasm, innovation, and excellence in the field of environmental education, and this award honors his memory by rewarding efforts to strive for these qualities.

MAEOE will present the Robert Finton Outdoor Educator of the Year Award to an individual who demonstrates leadership and innovation in environmental and outdoor education. The recipient will be a non-formal practitioner of outdoor education.

To submit a nomination, please visit www.maeoe.org. Nominations are due by December 31, 2011.

Donate to Our Silent Auction!

We need your donations of books, experiences, art and crafts, environmental items, or zany bits and pieces that entertain and delight! Donations benefit MAEOE's scholarship fund. Contact Lisa Jones at lisaj@livingclassrooms.org. The auction will close Saturday, Feb. 11 at 5:15pm. Winners will be notified at the Saturday night social.

2012 MAEOE Challenge!

Make a Rube Goldberg Machine (Think Mouse Trap Game) using only recycled material. No minimum size but not to exceed 3' x 3'. It must have at least 7 trigger points and the end result should

be to feed or water a plant or animal. Have Fun with it and be creative! Fire and explosives are prohibited. Please email conference@maeoe.org to let us know you will be submitting an entry.

Support the MAEOE Conference!

Sponsorships at various levels are available to support MAEOE's conference. For more information, see our website at www.maeoe.org/conference/sponsors.php

Get the Word Out!

Want to reach over 500 environmental educators? MAEOE will accept materials to place in the registration packet that participants receive. A minimal fee of \$75.00 is required for this service.

Volunteer at the Conference!

It takes a village to put on a conference. High school students looking for service hours? Educators looking to become involved in environmental education on the state level? Please email conference@maeoe.org if you would like to help.

Conference Internet Café

Looking for cutting-edge resources and new tools to augment and complement your environmental and outdoor education efforts? Stop by the Internet Café to learn about these new online environmental resources:

- Bay Back Pack – Chesapeake Bay Program
- Fieldscope – National Geographic
- eSchool - Cacapon Institute

Thursday, February 9th – PDI & Field Experience

Environmental Film - Who Killed Crassostrea Virginica? The Fall and Rise of Chesapeake Bay Oysters

Michael Fincham, Maryland Sea Grant College.

9:00am-11:00am and 1:00pm-3:00pm
Location: UMES

The Chesapeake was once home to the richest oyster grounds in the world. The native oyster, *Crassostrea virginica*, built massive reefs and filtered vast reaches of the Bay, removing algae and sediment. Now those reefs are gone. The historic fishery is a mere shadow.

This documentary, presented by Michael Fincham veteran filmmaker at MD Sea Grant College, details both the poignant destruction of a fabled fishery and the prolonged scientific inquiry into the origins of a killer parasite. Come learn about the history of the oyster fishery and the unique intersection of science inquiry and art.

Follow the Drop of Water

Erol Miller, Northwood High School, Montgomery County, MD

Alexander Chen, Urban Studies and Planning Program, University of Maryland

9:00am-11:00am and 1:00pm-3:00pm
Location: UMES

This hands-on workshop will demonstrate activities designed to introduce 9th grade students to the principles and practices of environmental studies. The activities will integrate Google mapping products with Fieldscope, a web based mapping analysis tool supported by National Geographic and available US Census data. Students will use the Fieldscope software to trace the path of a drop of water as it flows from their school to the Chesapeake Bay, as well as identify the watershed it crosses. In turn, students will learn how to access available census data and describe the population characteristics of its residents in the watershed. In addition, students will learn how to identify specific land uses that directly impact

the quality of the drop of water. Finally, students will learn how to make field observations and take water samples of streams where the drop of water enters. These results will be uploaded to the Fieldscope site to share. Participants will replicate the different modules which will be developed for classroom use. They will become familiar with how to integrate available online mapping and data resources to engage students in the study of their environment. The modules are designed so that they can be modified for local study.

Which Way to the Oyster Bar?

Adam Frederick & Jackie Takacs, Maryland Sea Grant College Extension Program.

9:00am-11:00am and 1:00pm-3:00pm
Location: UMES

Oysters have been around for millions of years - they were used for food, tools, weapons and decoration. During the early 1600s in the Chesapeake region, oyster bars were so numerous and large, that they were reported as navigation hazards by Captain John Smith. Today, the state of the oyster fishery in the Chesapeake has dwindled to less than one percent of its historical mass. Learn about key reasons for this decline and hands-on activities related to the following topics:

- Overharvesting
- Disease
- Anatomy
- Ecology
- Sedimentation and pollution

Do You Ever Wonder if Your Seafood is Safe?

Dr. Salina Parveen & Seafood Technology Specialist, Tom Rippen, UMES

9:00am-11:00am and 1:00pm-3:00pm
Location: UMES

This session will cover seafood safety programs at UMES' Center for Food Science and Technology. Researchers and Sea Grant Extension work together to identify potential problems and seek solutions. Topics include an overview of university outreach programs with the seafood industry and studies with oysters and the blue crab industry. Presentations will include classroom,

laboratory tour and demonstrations of traditional and molecular techniques for tracking bacteria in the environment.

Building Climate Understanding

Bart Merrick, NOAA/NCBO

Full Day Workshop 9:00am-4:00pm
Location: Oxford Cooperative Labs

Climate change is the most important environmental issue of our time. Overwhelming trends illustrate this change and the wide-ranging impact on society and the environment from the melting of ice sheets to sea level rise, ecosystem changes, alterations in the ocean chemistry and global water supplies. The U.S. is already facing the impact of climate change and the Chesapeake Bay Region is particularly vulnerable. Learn about key aspects of climate change, access teaching resources and experience hands-on activities to explore changing climate issues.

Thursday Evening Field Experience:

Swanfall – An Exploration of the Tundra Swan

4:00-7:00pm

Maximum 20 participants

Transportation provided from Ward Museum to observation site

Departure Location: Ward Museum of Wildfowl Art Parking Lot, 909 South Schumaker Drive, Salisbury MD 21804

Journey with Tom Horton to the banks of the Nanticoke River to view hundreds of Tundra Swans fall out of the sky to roost on the river, a spectacle referred to by Tom as a *Swanfall*. As its name implies, the Tundra Swan which is among the world's largest and heaviest flighted birds, breeds on the high tundra at the top of North America. Throughout the evening you will have an opportunity to discuss what compels these swans to journey 4000 miles from arctic breeding grounds to winter on the Delmarva Peninsula. Receive a copy of the new edition of *Swanfall: Journey of the Tundra Swan* by Tom Horton and David Harp. **Additional Fee: \$10.00**

Friday February 10th – Symposium, Workshops & Training

Outdoor Center Symposium

Time: 8:15 – 8:45 a.m. Pre-Symposium

Time: 9:00am - 12:00pm.

Networking lunch at noon. - \$15

Location: Clarion

Pre-Symposium: This year a pre-symposium meeting will focus on updating Outdoor Environmental Education Center staff on the Maryland State Department of Education changes in environmental education, including the new high school graduation requirement. This session will be tailored to meet the needs of informal environmental educators who provide support to schools.

Symposium: The Annual Symposium for Outdoor Environmental Education Centers will bring together formal and informal environmental educators to share new ideas, challenges, and best practices focused on common interests: grants and partnerships, professional development to school staff, and innovative lessons. It will also provide networking opportunities to promote outdoor environmental experiences for children across the state.

Friday Full Day Workshop (9:30am - 3:30pm)

MD Master Naturalist Program Facilitators Training

Wanda MacLachlan, MD Master Naturalists
Lunch is included. Limit 30 participants

MAEOE in partnership with the University of Maryland Extension Master Naturalist Program is offering the following Full Day Professional Development opportunity: MD Master Naturalist training for program facilitators. Those wanting to be able to train volunteers as naturalists at their sites in the Piedmont or Coastal Plain regions of the state will be able to train on the Eastern Shore. Training will be offered on Friday at the Clarion.

A Program Facilitator must attend a 6-hour Program Facilitator Workshop to learn to organize and administer a

Master Naturalist Training Program. The program facilitator commits to working closely with the state Master Naturalist program coordinator to ensure continuity in the program.

Become a University of Maryland Extension Master Naturalist Program Facilitator and learn to administer the science-based volunteer training program at your local facility.

Friday Morning Workshops (9:00am - 12:00pm)

How to Grow a Green School

Joanne Schmader, MAEOE

Educate and excite teachers about the Maryland Green School Program and its benefits for their school. Why Should My School Become A Maryland Green School? How will this program help my school meet state environmental literacy standards and the state high school graduation requirement? What are the academic, environmental and other benefits of becoming a green school? The workshop includes a detailed explanation of the application requirements and process, provides many ideas, examples, and resources to help you plan for your school.

Boat Over Boat Canoe Rescue Training

Frank Marsden, Eden Mill Nature Center
Limit 16 participants

This workshop will teach the skills to safely empty a capsized canoe and assist paddlers back into their canoes in deep water. Several entries will be taught that will enable all individuals with various abilities to reenter the canoe. Basic strokes will be taught, all participants will be both the rescuer and victim. Participants will be getting wet. PFDs and all equipment will be supplied. American Canoe Association Instruction. All participants that successfully complete this, will receive a certificate that will give them the opportunity to complete a full, 1 day, ACA canoe course at Eden Mill Nature Center in the Spring.

Lights Camera Action! Using Digital Tools to Teach Environmental Education

Denise Frebertshauser, University of Maryland Extension

Participants will explore the use of digital video production as a multimodal method of topic exploration for students' inquiry projects. Curriculum resources and web links will be provided for participants to confidentially conduct their in or afterschool digital media work. This is a hands-on class! Participants will have the opportunity to utilize a digital video camera, practice framing, and develop a project using video production software. Participants will explore the use of the digital video production as a multimodal method of topic exploration for students' inquiry projects. The use of digital video production enables storytelling and provides students with a concept of audience for their work.

Engaging Youth in Ecology & the Natural Environment through Art & Nature

Desiree Shelley, Parks & People Foundation

Educators (formal and informal) will learn through visual, written and performing arts how to engage and educate students about ecology and their natural environment as well as connect them to nature. Lessons are aligned with the Maryland Core Learning Goals and Curriculum Standards. The presentation highlights 3 pilot programs that served upper elementary and middle school youth in Baltimore City Public Schools and a high school program serving young adult Baltimore city youth participating in a youth workforce and green career development program. Presentation includes demonstrations on several different art & nature projects and lesson plans as well as suggestions and tips on how to make environmental education lessons interdisciplinary in academic subjects such as science, math, reading/language arts and social studies and how to translate these topics into visual and performing arts projects

Friday, February 10th - Workshops *(continued)*

that engage students on a creative level. The workshop will conclude with a round table discussion and hands-on participation. Participants will make their own "Art & Nature" project and discuss new ideas and ways to combine art, nature, environmental literacy and academic skills.

Planning Ahead: Hands-On Activities that Teach Sustainability Concepts

Thomas Hutson, University of Maryland Extension

This workshop will share a variety of hands-on activities that help youth ages 8 through 18 explore environmental issues and learn techniques for living a more sustainable lifestyle.

The workshop will investigate several issues that pose threats to sustainability. The presentation will include a set of lessons that feature hands-on experiential learning opportunities for educators to use with youth. Goals of the workshop include (1) increasing environmental literacy, (2) understanding sustainability topics, and (3) equipping Maryland citizens with strategies that help them lead more sustainable lifestyles. Participants will receive print copies of and/or internet access to lesson plans for each activity.

Chesapeake Exploration – Online Activities for Exploring Chesapeake Bay Data

Bart Merrick, NOAA Chesapeake Bay Office

This workshop will introduce and train educators on the use of the fully functional Chesapeake Exploration system. Participants will learn how to work with Chesapeake Exploration, a set of online activities that provides unprecedented access to Chesapeake Bay Data and brings the science of the Chesapeake Bay to life. The session will be a combination of formal presentation and hands-on training with activities from Chesapeake Exploration. NOTE: Participants should bring a laptop

with Wifi to access and utilize the curriculum.

Flying WILD Educator Training

Kimberly Check, Ward Museum of Waterfowl Art, Salisbury University

The purpose of the Flying WILD program is to engage middle schools in bird education efforts with the intent of encouraging increased environmental stewardship among youth. Special emphasis is placed on creating an approach that is readily adaptable for urban schools, often with underserved students who traditionally receive few opportunities to participate in environmental education initiatives.

During this 3 hour training, educator's will learn how to integrate bird education and conservation activities into school curriculum and other educational programming in an engaging, successful, and academically purposeful manner. In addition to receiving the Flying WILD: An Educator's Guide to Celebrating Birds guide, participants will also receive a CD-Rom containing the Copy Me pages and use of Flying WILD Educator Kits. Other resources provided to participants include access to resources provided by the network of bird experts, bird organizations, and environmental professionals assisting with the Flying WILD initiative.

Technology in a Bag

Cindy Ghent, Towson University

This workshop showcases the use of handheld devices and meters to enhance learning about ecological and environmental concepts. Using technology in an outdoor setting mimics the way environmental and conservation scientists do their work. Participants will learn to use several handheld devices and meters used to gather data about a study site. Using digital compasses, the participants will find their study site (ie. geocaching) and use other meters in the field bag to answer questions found at their site. The meters include a kestrel weather meter, a densiometer, a clinometer, and others.

Camp Emergency Response and Preparedness

Keith Williams, North Bay Adventure

Lions and Tigers and Bears, oh my...or more realistically, thunderstorms, and noro virus, and injuries, OH NO!!! It is our job to keep other peoples kids safe in the outdoors, to minimize the likelihood of bad things happening as much as possible and to respond appropriately to minimize those effects. This workshop will discuss emergency planning and response for a host of emergencies a center can encounter. Participants will complete an outline of an emergency response plan they can flesh out once they return to their centers.

Friday Afternoon Workshops (1:00pm - 4:00pm)

Creating a Rain Garden as a Schoolyard Habitat

Sarah Hilderbrand, Environmental Concern Inc.

As the amount of impervious surfaces such as roof tops, parking lots, and driveways increase so does the amount of runoff carrying pollutants into surrounding waterways. A rain garden, planted with deep rooted native plants, is designed to capture runoff, provide water infiltration, filter harmful pollutants, and create wildlife habitat. These landscape features can be low cost and low maintenance, and are a perfect way for schools to improve local water quality. There are several steps to planning and implementing a successful rain garden. Participants of this workshop will learn these steps and how to get student involved in the process. Interactive format will present ideas for lessons with students as well as technical information about how to measure, design and plan a rain garden installation.

Friday, February 10th - Workshops *(continued)*

Integrating Agroecology into Science for Green School Curriculum

Peggy Eppig, Keene State College & Maryland Ag Ed Foundation

Agroecology is an emerging field that combines environmental science, agriculture and natural resources. As an applied science it addresses food systems, climate change, social and environmental justice and ecosystem services and a good curricula fit for Green Schools! Agroecology is a hands-on science that blends several scientific and social sciences within a framework of agriculture and environmental science. This workshop will demonstrate how teachers can build standards-aligned curriculum to incorporate real world research design into the sciences to enhance Green School opportunities. All disciplines are welcomed, formal and non-formal educators. Dress for mess!

The Fish Mobile – Bringing the Living Chesapeake into the Classroom

Kelly Cox, Phillips Wharf Environmental Center

The Fishmobile is a resource to introduce students to live Chesapeake Bay organisms, excite students about the natural world, and expand the impact of a wide range of curricula. Our mission is to inform, inspire, and involve. Converted from a bookmobile, the Fishmobile is a rolling aquarium that brings living specimens of Chesapeake Bay organisms to the classroom or other education venue. Students directly observe and interact with live animals. The Fishmobile experience can enhance lessons in science, language arts, mathematics, social studies, and the arts, limited only by the educator's imagination. Workshop participants will tour the Fishmobile, which will be set up, stocked, and fully functioning. We will demonstrate how to integrate this unique resource with various lesson plans and activities, and provide an opportunity to brainstorm and discuss ideas that would fit your classroom or venue specifically.

Growing Up WILD Educator Training

Kimberly Check, Ward Museum of Waterfowl Art, Salisbury University

Growing Up WILD demonstrates through its materials and training programs how early childhood learning objectives can be reached through use of the outdoors and nature-themed activities combined with art, music, and play. It also builds the confidence of early childhood educators to lead outdoor explorations by providing ready-made activities, easily digestible background information, and high quality personal training programs. Through a wide range of activities and experiences, Growing Up WILD provides an early foundation for developing positive impressions about the natural world and lifelong social and academic skills.

During this 3 hour training, participants will be introduced to the Growing Up WILD curriculum through a sampling of its thematic activities that feature music and movement, outdoor components, art projects, healthy snacks and take home extensions. Participants will receive a copy of the Growing Up WILD curriculum guide that contains 27 activities. **Special note:** The fee to attend this workshop is \$20 per person.

Using Inquiry to Explore Nature

Kim Dixon, The Maryland Zoo in Baltimore

Teachers will learn to use comparative inquiry to engage students in nature studies. While learning to transform themselves from the center of the classroom universe to an active member of the learning team, teachers will utilize their powers of observation as they become natural scientists for the day! Participants will learn about guided and open inquiry and then do your own inquiry investigations outside. Participants also learn how to set up an inquiry center/inquiry bags and how to challenge students to seek answers on their own!

eBird: Integrating Technology and the World of Birds

George Radcliffe, Maryland Ornithological Society

Participants learn ways to use technology and the web to submit and access bird data for classroom use and will make field observations and use the eBird technology. Instructors will demonstrate how technology can be used in the collection and reporting of birding data. Whether using a schoolyard feeder or collecting observations from a birding trip, individuals can use GPS units and Google Earth to pinpoint locations of observations. Online the eBird site can be used to submit observations as well as recover data in a variety of formats for educational use. After classroom orientation to eBird, participants will apply the strategies at two Ocean City birding locations. Binoculars will be provided. Also highlighted will be a summer program where both educators and students can be trained to use these technologies at a higher level.

Worldwide Outdoor Treasure Hunt: An Introduction to Geocaching

Steven Mickletz, Irvine Nature Center

Learn about geocaching and use technology as a way to get families outdoors and increase the number of new visitors to your organization. Participants will be equipped with the knowledge to create a geocaching trail. Geocaching is a worldwide treasure hunt with over 5 million participants that has been around since May 2000, yet surprisingly few people know what it is or how it works. Learn the terms, tools, and technique of a growing craze that can help you introduce others to your love of the outdoors. Participants will learn how to find caches, activities that can be used for a geocaching program, and how to create a geocaching trail for others to find. Expect to be outdoors for about half of the program with a trip to Highland Park during the last hour to put your skills to the test!

Friday, February 10th - Workshops & Training *(continued)*

Risk Management for Leaders: Building Your Organization & Programs

Mike Harding, Markel Service

Risk Management is an empowering tool you can use to lead your organization to fulfill its mission and improve capacity. You will learn about: the process of risk management and your role as your organization's risk management leader; techniques to help protect and develop your staff, goodwill, property and income; establish priorities with a "Risk Management Matrix"; and create a culture of risk management. This workshop includes a presentation and interactive session designed to give participants an action plan to apply specific goals for building their organization.

Boat Over Boat Canoe Rescue Training

Frank Marsden, Eden Mill Nature Center
Limit 16 participants

This workshop will teach the skills to safely empty a capsized canoe and assist paddlers back into their canoes in deep water. Several entries will be taught that will enable all individuals with various abilities to reenter the canoe. Basic strokes will be taught, all participants will be both the rescuer and victim. Participants will be getting wet. PFDs and all equipment will be supplied. American Canoe Association Instruction. All participants that successfully complete this, will receive a certificate that will give them the opportunity to complete a full, 1 day, ACA canoe course at Eden Mill Nature Center in the Spring.

Saturday, February 11th Workshop Highlights

Saturday Sessions

Time: 8:30 am - 5:00pm

Don't miss the 55 + exciting workshops offered. Full listing of Saturday Sessions is available online at www.maeoe.org

Here are just a few:

- Project Butterfly WINGS
- Ecosystem Engineers: Teaching Using Smithsonian Science
- Way to Grow! Propagating & Growing Native Plants
- Turning Trash into Cash: Environmentally Sustainable Fundraising
- Salad Science

Sunday, February 12th Field Experiences

Winter Bird Walk - Exploring Inlet Hotspots

7:30am - 11:30am

Location: Meet in the hotel lobby
Bring your binoculars and enjoy outdoor education opportunities while identifying winter bird residents in the local environs. Join Wayne Bell, who has conducted winter birding trips to Ocean City for more than 20 years, and explore inland hot spots to identify wintering bird life with emphasis on northern species that do not breed in Maryland. Possibilities include Common and Red-throated Loons, Great Cormorant, Northern Gannet, Peregrine Falcon, Bonaparte's Gull, Common Eider, Harlequin Duck, and many other species of sea duck and puddle duck.

Mr. Bell is senior associate, Washington College and past-president, Maryland Ornithological Society. Bring your own binoculars; spotting scopes also useful and those available will be shared. Layers of warm clothing essential. Beginning birders of all ages welcome.

Winter Canoeing on the Pocomoke River

9:00am - 1:00pm

Location: Participants will meet at the Pocomoke River Canoe Company in Snow Hill, Maryland, located at the drawbridge at 312 North Washington Street in Snow Hill. For directions or more information, please visit: <http://www.atbeach.com/amuse/md/canoe/>

Join Jim Rapp, Director of the Hazel Out-

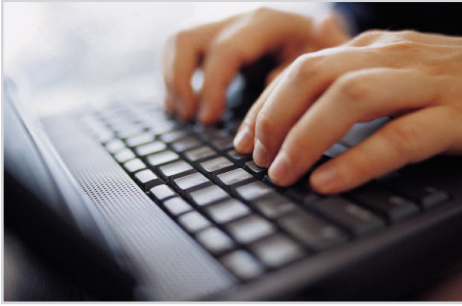
door Discovery Center, for a winter paddle on the dark waters of the Pocomoke River. The Pocomoke is known as the northernmost of the southern swamps. The bald cypress swamp is home to the pileated woodpecker, barred owl, beaver, and river otter.

From Snow Hill, vans will carry participants to the Nassawango Creek canoe launch at Red House Road. We will paddle through sections of The Nature Conservancy's Nassawango Creek Preserve back to Snow Hill.

For information about the Preserve: <http://www.nature.org/wherework/northamerica/states/maryland/preserves/art21134.html>

Additional Fee: \$25 includes canoe, paddle and PFD. Please dress for winter weather, and bring binoculars! For more information or last minute updates, please call Jim Rapp at 443-614-0261 or email dlitedirector@comcast.net.

2012 Registration Information



SORRY, NO ON-SITE REGISTRATION.

Save Paper: Register Online!

Use your Visa or Mastercard to register online at www.MAEOE.org through January 27, 2012.

To Register by Mail

Complete BOTH PAGES of the registration form. Mail it with a check for payment to the address provided on the form. Please complete a separate form for each person registering. **Please note that a processing fee of \$10 is required for paper registrations.** To set up payment using a Purchase Order, please contact us at conference@maeoe.org.

Deadlines: Save Money!

The sooner you register, the more money you save. See details on the registration form. For the lowest conference rate, register and pre-pay by January 4, 2012.

Membership Matters!

Member benefits have changed! Be sure to check them out at www.MAEOE.org before registering. Being a MAEOE member saves you even more money this year.

The Conference Package

Standard Registration Includes Friday Opening/Key Note, Exhibit Hall Reception, Saturday Breakfast, All Saturday Sessions, Saturday Lunch, Conference Closing, Saturday Social. NOTE: Thursday/Friday Workshops and Sunday Field Experiences can be added to any Standard Registration.

Student Registration - Same as Standard, but available to full-time students only.

Presenters Registration – Reduced Standard Registration. (Thank you for your contribution to the conference.) NOTE: Only two presenters per session are eligible for the Presenter Registration Rate.



MAEOE

Maryland Association for Environmental and Outdoor Education

Refunds?

Cancel by January 4, 2012 and you will receive a full refund less a \$20 processing fee. By January 15, you will receive a 50% refund. Sorry, no refunds after January 15. Unless highways are closed due to inclement weather, the conference will take place and no refunds will be given.

Exhibitors Registration

Exhibitor Non-Profit Registration Rate - Includes one Standard Registration plus one Exhibit Table.

Exhibitor For-Profit - Includes one Standard Registration plus one Exhibit Table.

The MAEOE conference exhibits have become a very popular and rewarding tradition for both attendees and exhibitors. A special "Exhibit Activity" is planned for Friday, February 10th to encourage all participants to visit each booth. In the past several years, booth space has been very popular, with a high percentage of exhibitors returning.

Friday, February 10th

Set-up	9 am - 5 pm
Exhibit Social	8 pm - 10 pm

Saturday, February 11th

Exhibit Hours	7:30 am - 6 pm
Tear-Down	6 pm

Consider purchasing a sponsorship to increase visibility and make an impression within the environmental/outdoor education community.

Exhibitors receive one (1) exhibit table, and one (1) full conference registration (socials - Friday/Saturday, sessions and Saturday lunch). Additional personnel must register separately and pay full registration fee. (Note: Exhibit space is limited and subject to availability). Wi-fi is available within the exhibit hall.

Bonus: Reserve your space early to take advantage of registration savings!

Save paper: Register yourself and your table on-line at www.maeoe.org! Be sure to complete the required, on-line exhibitor registration form. Register by January 4, 2012, to be listed in the conference program.

Questions?

Call the 2012 Conference Hotline at (443) 824-1953 or visit the MAEOE website for updated and detailed information. Hours of operation: Tuesdays, Thursdays and Fridays 9:30am – 2:30pm. You may leave messages at any time and we will return your call. www.maeoe.org

MAEOE 2012 Registration Form

Save paper and the \$10 paper registration fee! Register online at www.maeoe.org through January 29, 2012 or complete this TWO PAGE form and mail it with payment to MAEOE. Please complete a separate form for each person registering.

Fulfilling Environmental Education's Promise:

Authentic Learning and Real World Impact

Name _____
 Address (home) _____ City _____ State _____ Zip _____
 Phone (home) _____ E-mail _____
 School/Organization _____ County _____
 Phone (work) _____ Fax (work) _____

Profession School-based Environmental/Outdoor Center Non-profit Student
 For-profit College/University Government Other _____

Do you work at a Maryland Green School or Green Center? Yes No
 Is your school or center working toward becoming a Maryland Green School or Center? Yes No
 Do you plan to attend the Green School review session on Saturday? Yes No
 How many MAEOE conferences have you attended? _____
 How did you hear about this conference? _____

	Register by Jan 4	Register by Jan 15	Register after Jan 15	Fee
Thursday - Professional Development Institute	MEMBER \$30 per session – or \$60 for full day session NON-MEMBER \$35 or \$70	MEMBER \$35 per session – or \$70 for full day session NON-MEMBER \$40 or \$80	MEMBER \$40 per session – of \$80 for full day session NON-MEMBER \$45 or \$90	\$ _____
MD Master Naturalists Training (Fri. full day)	\$175	\$185	\$195	\$ _____
Friday Workshops	MEMBER \$50 per ½ day session NON-MEMBER \$55	MEMBER \$55 per 1/2 day session NON-MEMBER \$60	MEMBER \$60 per 1/2 day session NON-MEMBER \$65	\$ _____
Friday Outdoor Center Symposium	\$15	\$15	\$15	\$ _____
Saturday Registration Standard	\$125 (member) \$175 (non member)	\$150 (member) \$200 (non member)	\$175 (member) \$225 (non member)	\$ _____
Saturday Registration Student	\$80 (member) \$105 (non member)	\$105 (member) \$130 (non member)	\$130 (member) \$155 (non member)	\$ _____
Saturday Registration Presenter	\$115 (member) \$165 (non member)	\$140 (member) \$190 (non member)	\$165 (member) \$215 (non member)	\$ _____
Exhibitor Registration includes one standard registration & one table	\$200 (non-profit) \$300 (for profit)	\$225 (non-profit) \$325 (for profit)	\$250 (non-profit) \$350 (for profit)	\$ _____
Field Experience	Tundra Swan \$20 (member) \$25 (non member) Winter Bird Walk \$10 (member) \$15 (non member) Winter Canoeing \$35 (member) \$40 (non member)			\$ _____ \$ _____ \$ _____
Guests (meals only)	Friday Lunch _____ # of Guests \$15 Each Saturday Lunch _____ # of Guests \$25 Each			\$ _____ \$ _____
Paper Registration Fee	\$10			\$ _____
MAEOE Membership	\$15 – Student \$30 – Individual \$100 – Organization \$500 – Corporate			\$ _____
MAEOE Donation	Please consider a tax-deductible donation to help support the work of MAEOE year-round. (Optional)			\$ _____

TOTAL PAYMENT ENCLOSED \$ _____

Name: _____ Phone: _____

Activity Selections

Thursday Professional Development Institute: If you registered for the Professional Development Institute, please check the workshop(s) and session you will attend.

- | | | |
|---|-----------------------------------|------------------------------------|
| Following a Drop of Water with Google Earth | <input type="checkbox"/> Morning | <input type="checkbox"/> Afternoon |
| Which Way to the Oyster Bar? | <input type="checkbox"/> Morning | <input type="checkbox"/> Afternoon |
| Who Killed Crassostrea Virginica? | <input type="checkbox"/> Morning | <input type="checkbox"/> Afternoon |
| Seafood Processing and Impact on Chesapeake Bay Fisheries | <input type="checkbox"/> Morning | <input type="checkbox"/> Afternoon |
| Building Climate Understanding | <input type="checkbox"/> Full Day | |

Field Experiences. Please mark the Field Experiences you will attend.

Thursday Field Experience:

- Swanfall – An Exploration of the Tundra Swan

Sunday Field Experiences.

- Winter Bird Walk Exploring Inlet Hotspots Winter Canoeing on the Pocomoke River

Friday Workshops. If you registered for the Friday workshops, please check the workshop(s) you will attend. You may choose a full day workshop or a combination of one morning workshop and one afternoon workshop.

Full Day Workshop

(9:30 a.m. - 3:30 p.m.) lunch included

- MD Master Naturalists Training

Half Day Workshops

Morning (9:00 a.m. - 12:00 p.m.)

- How to Grow a Green School
- Boat Over Boat Canoe Rescue
- Lights, Camera, Action! Using Digital Video Tools to Teach Environ.Ed.
- Engaging Youth in Ecology & the Natural Environment Art & Nature
- Planning Ahead: Hands-On Activities to Teach Sustainability Concepts
- Chesapeake Exploration – Online Activities for Exploring Chesapeake Bay Data
- Technology in a Bag
- Camp Emergency Response & Preparedness
- Flying WILD Educator Training

Afternoon (1:00 p.m. - 4:00 p.m.)

- Create A Rain Garden
- Integrating Agroecology into Science for Green School Curriculum
- The Fishmobile – Bringing the Living Chesapeake to Class
- Growing up WILD Educator Training
- Using Inquiry to Explore Nature
- ebird: Integrating Technology & the World of Birds
- A Worldwide Outdoor Treasure Hunt: An Introduction to Geocaching
- Risk Management for Leaders: Building Your Organization & Programs
- Boat Over Boat Canoe Rescue

Evening Activities. Please check the appropriate response and indicate the number of guests.

- Will you attend the FRIDAY NIGHT SOCIAL? No Yes # _____ guests (if any)
- Will you attend the SATURDAY NIGHT CELEBRATION? No Yes # _____ guests (if any)

**Make check payable to MAEOE and mail BOTH pages of this form to:
 MAEOE Conference, c/o 7761 Waterloo Road, Jessup, MD 20794
 MAEOE Conference Hotline: (443)824-1953 / Fax (443) 733-1219**